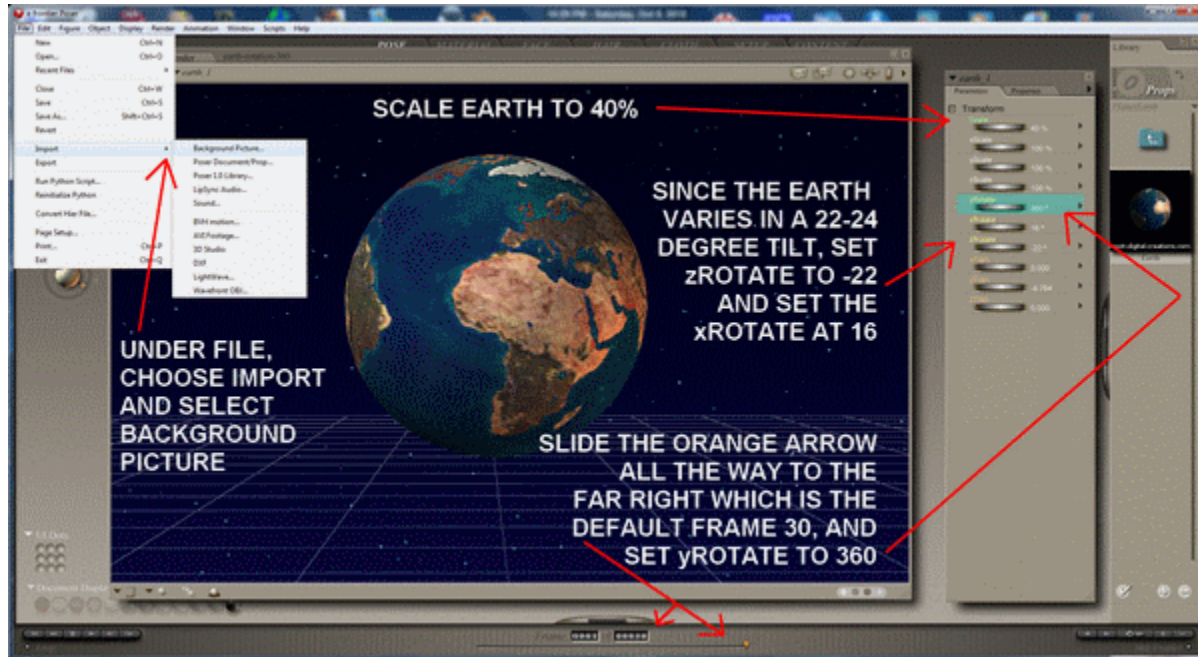


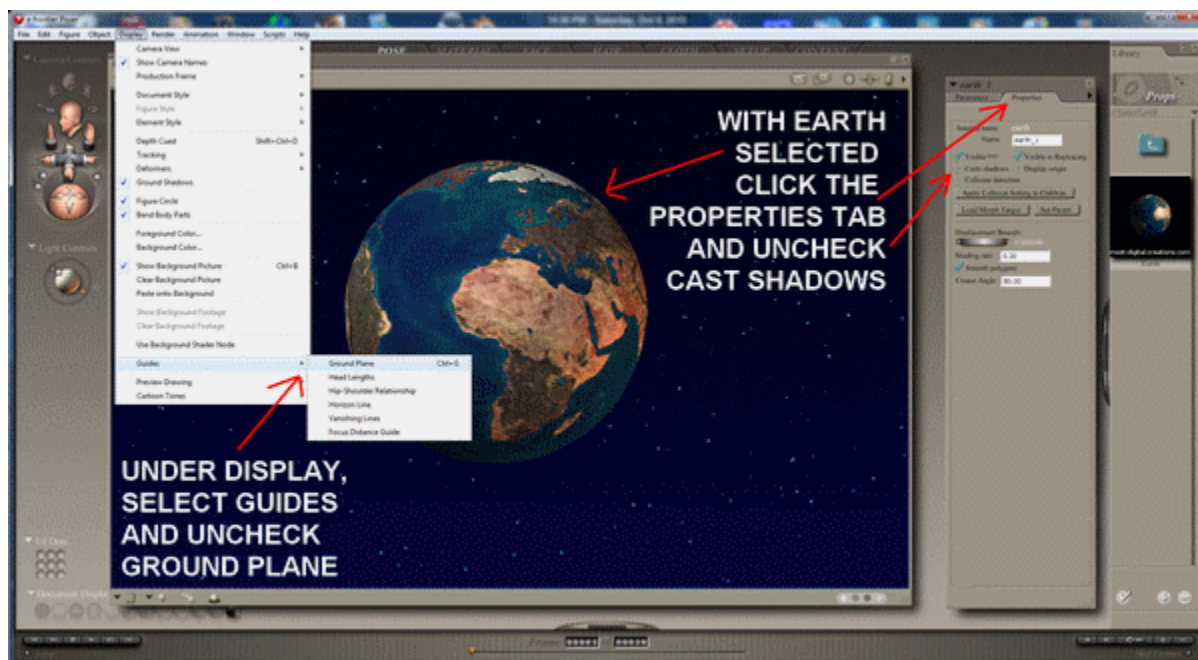
POSER 7 ANIMATION

EARTH ROTATION TUTORIAL

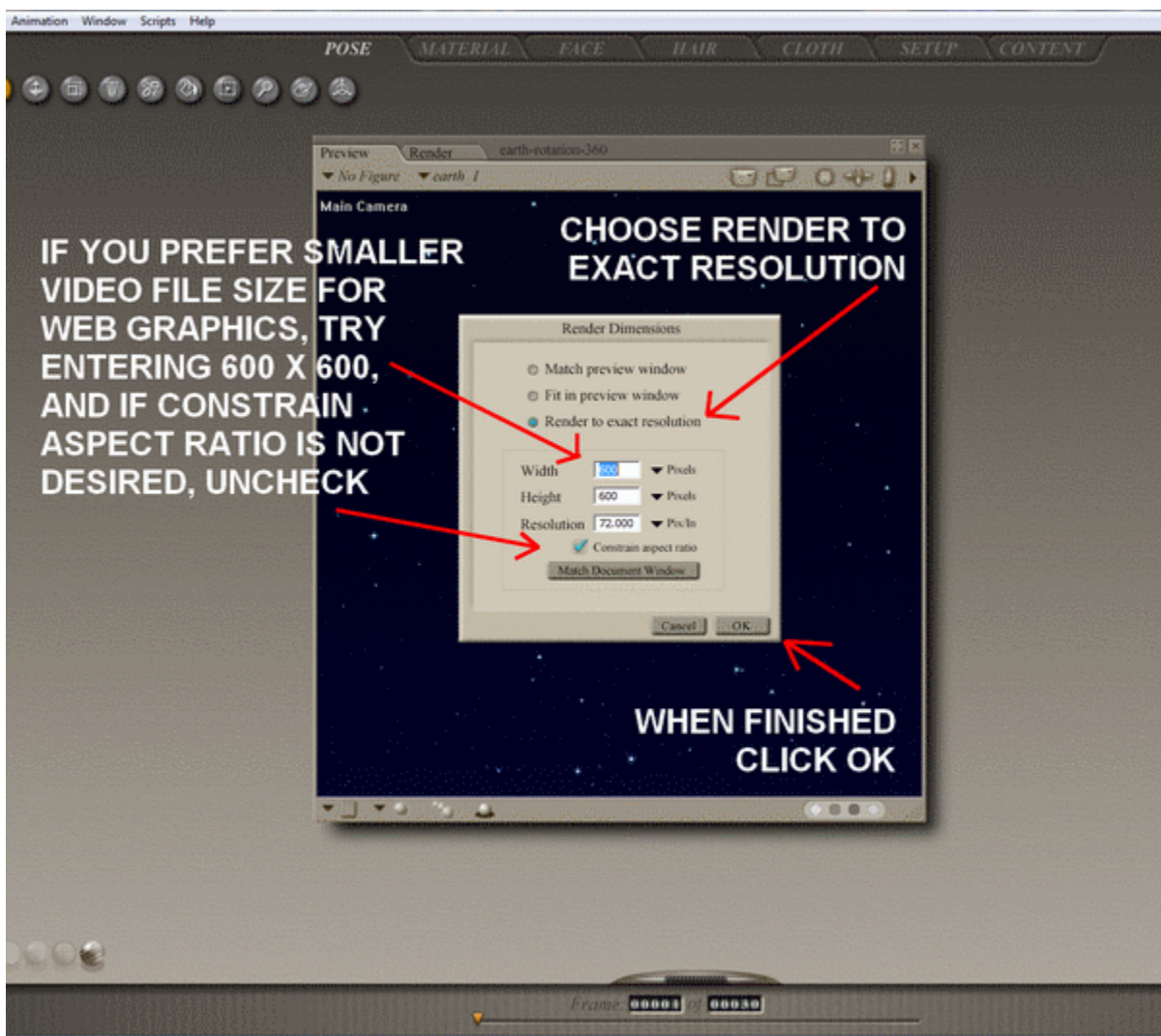
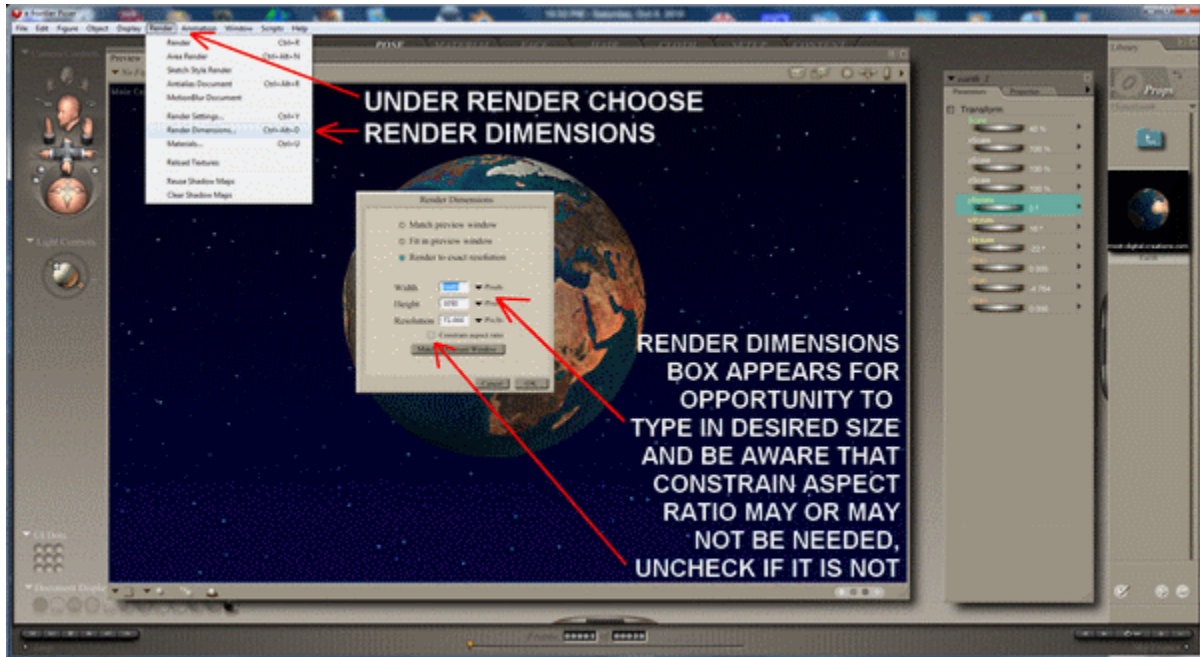
IMPORT BACKGROUND, SCALE EARTH, SET ROTATION



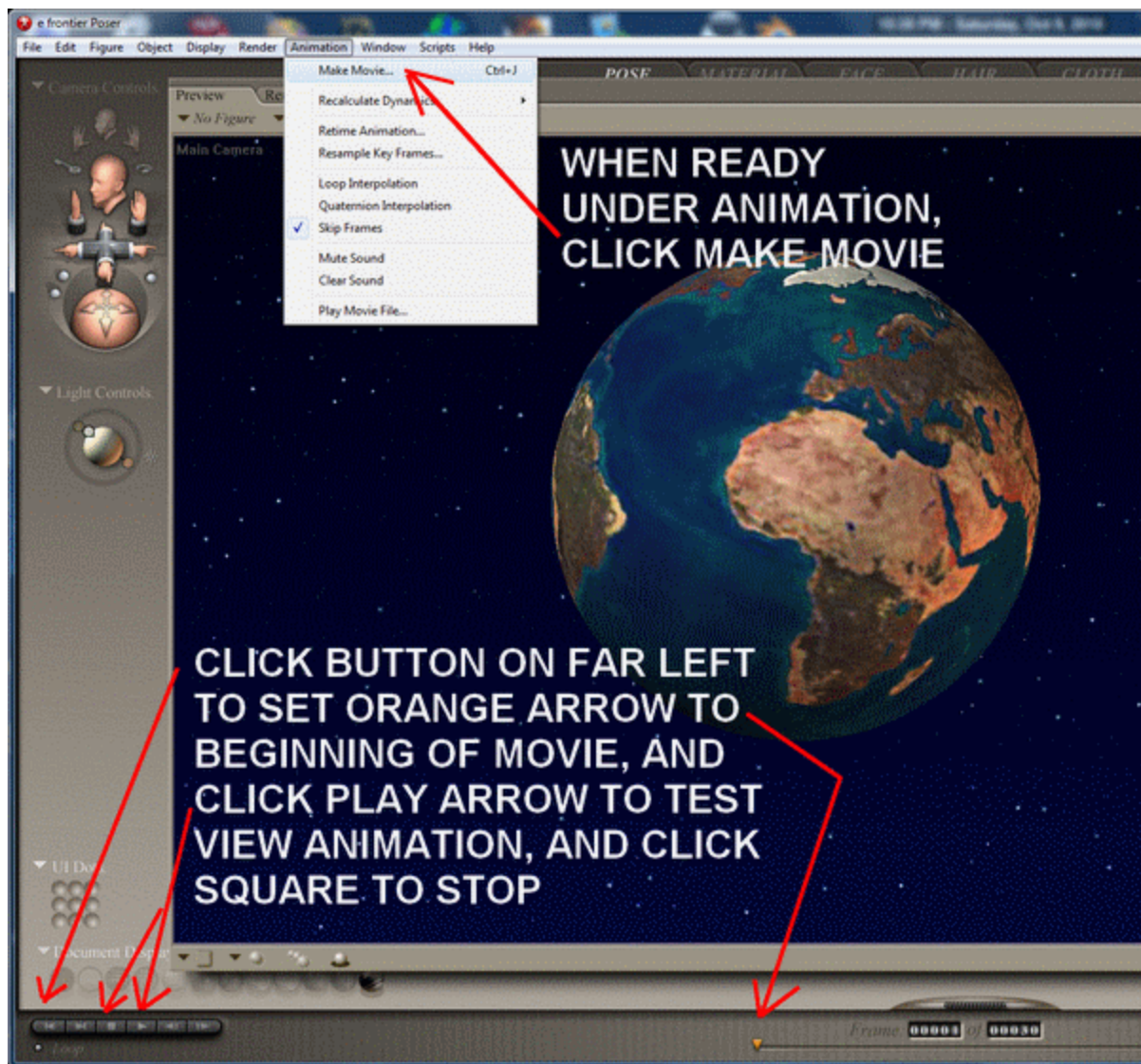
UNCHECK GROUND PLANE AND UNCHECK CAST SHADOWS



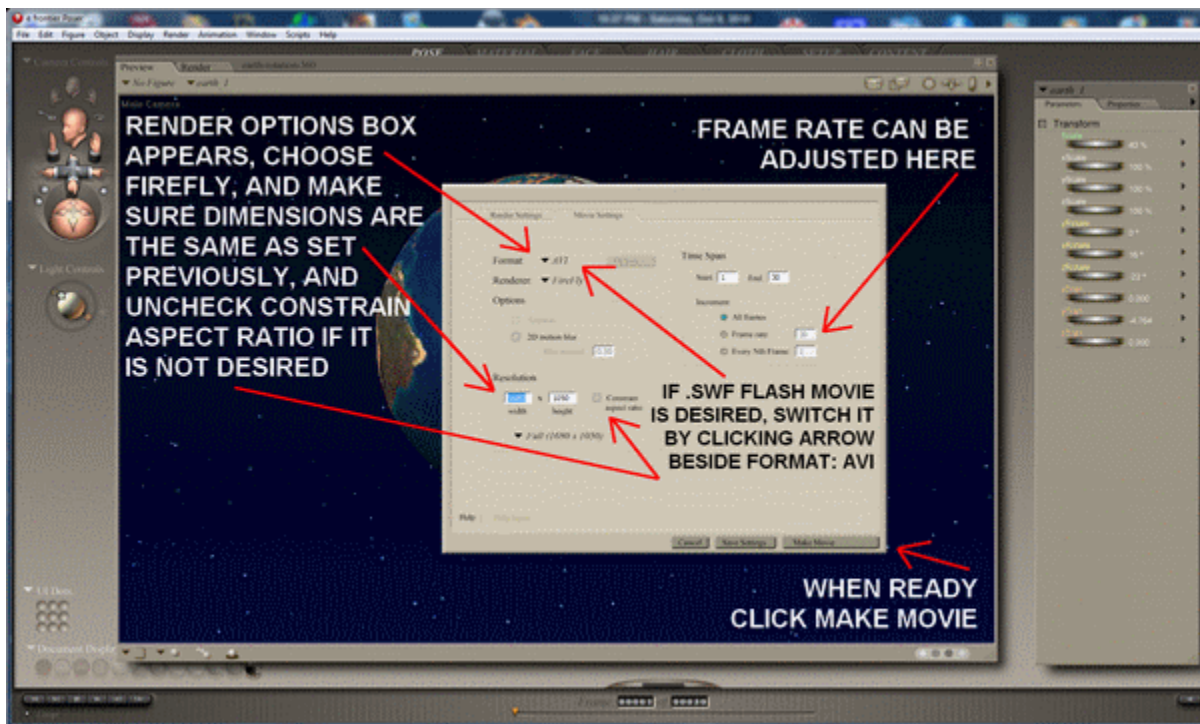
RENDER DIMENSIONS



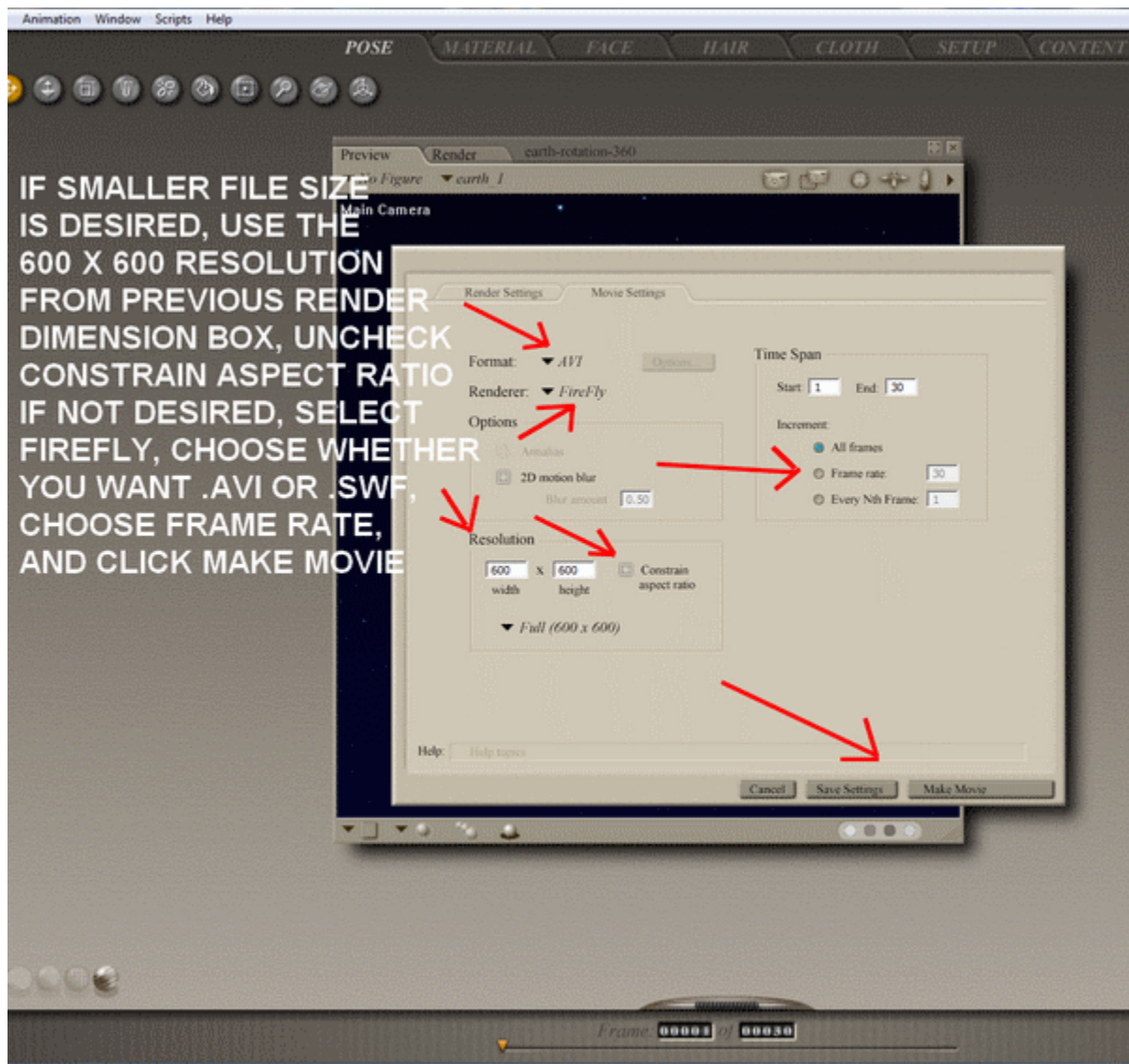
PREVIEW AND MAKE MOVIE



RENDER OPTIONS



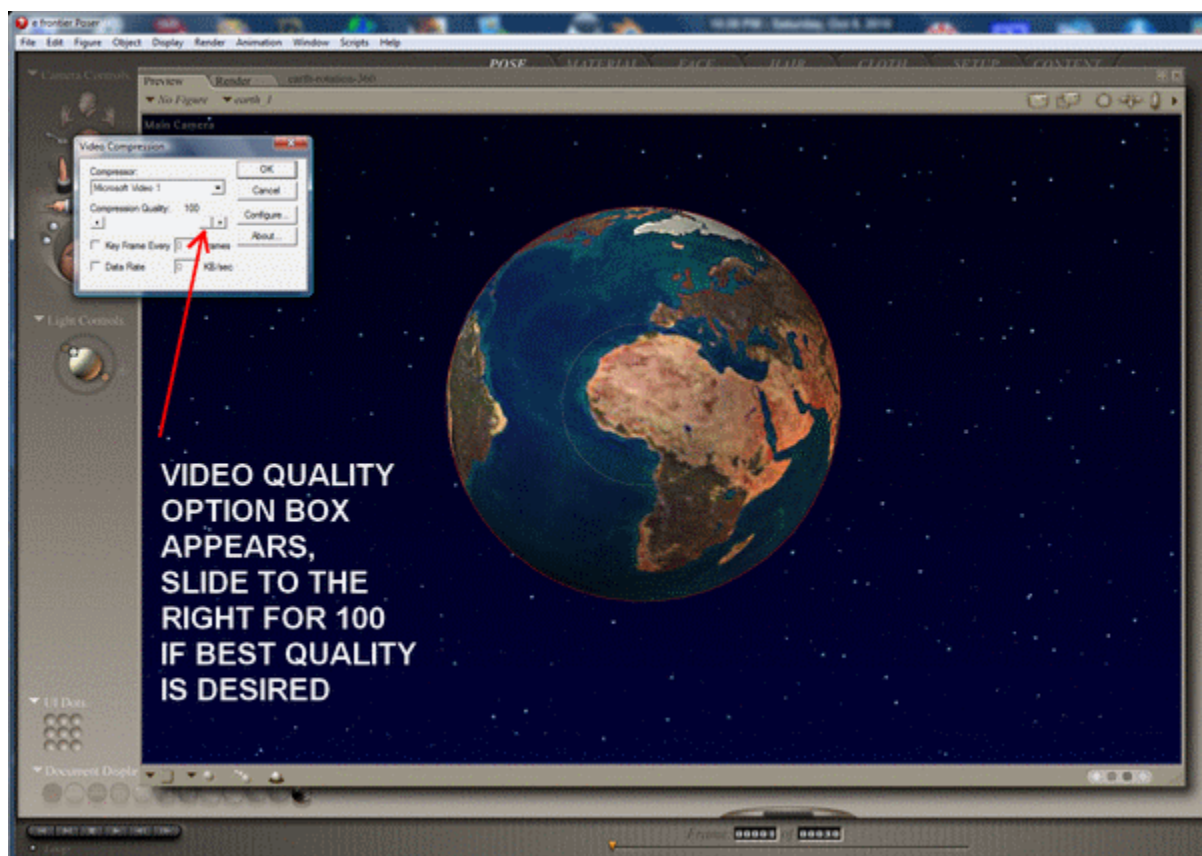
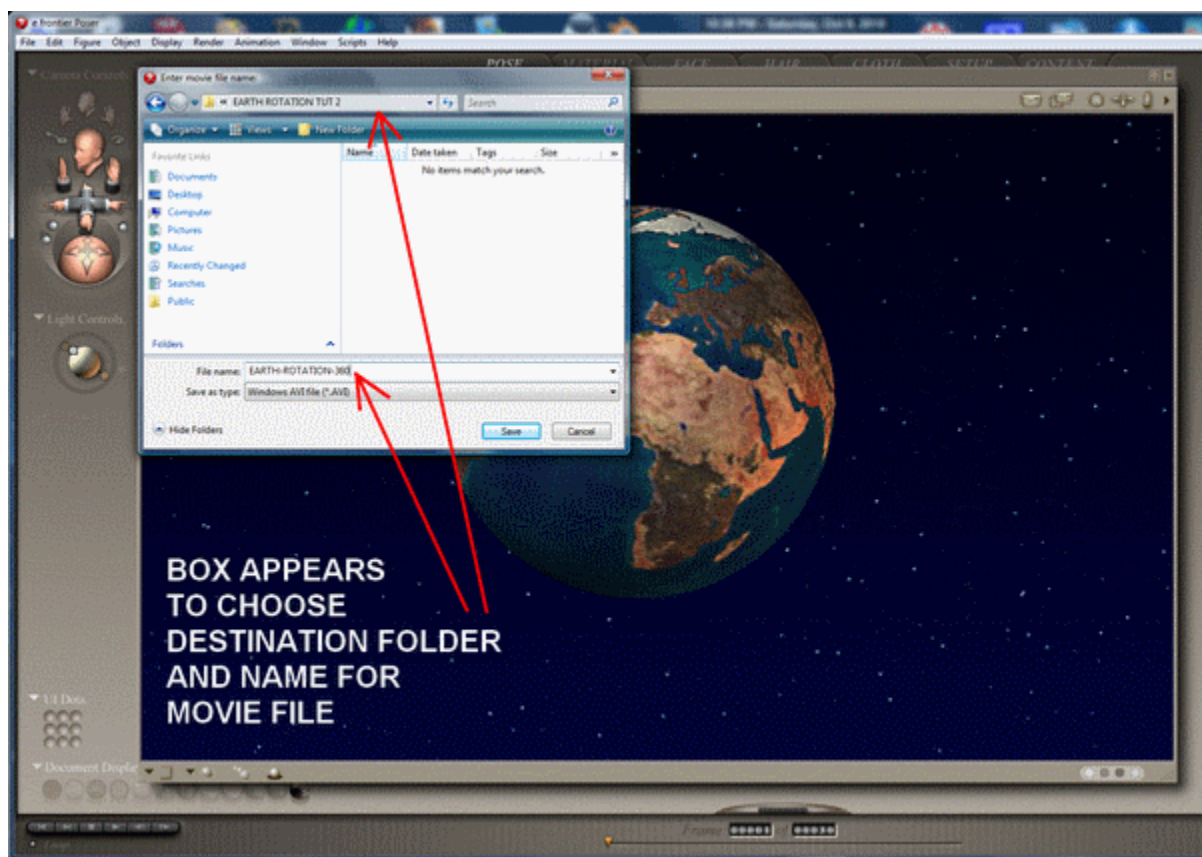
RENDER OPTIONS FOR SMALLER FILE SIZE



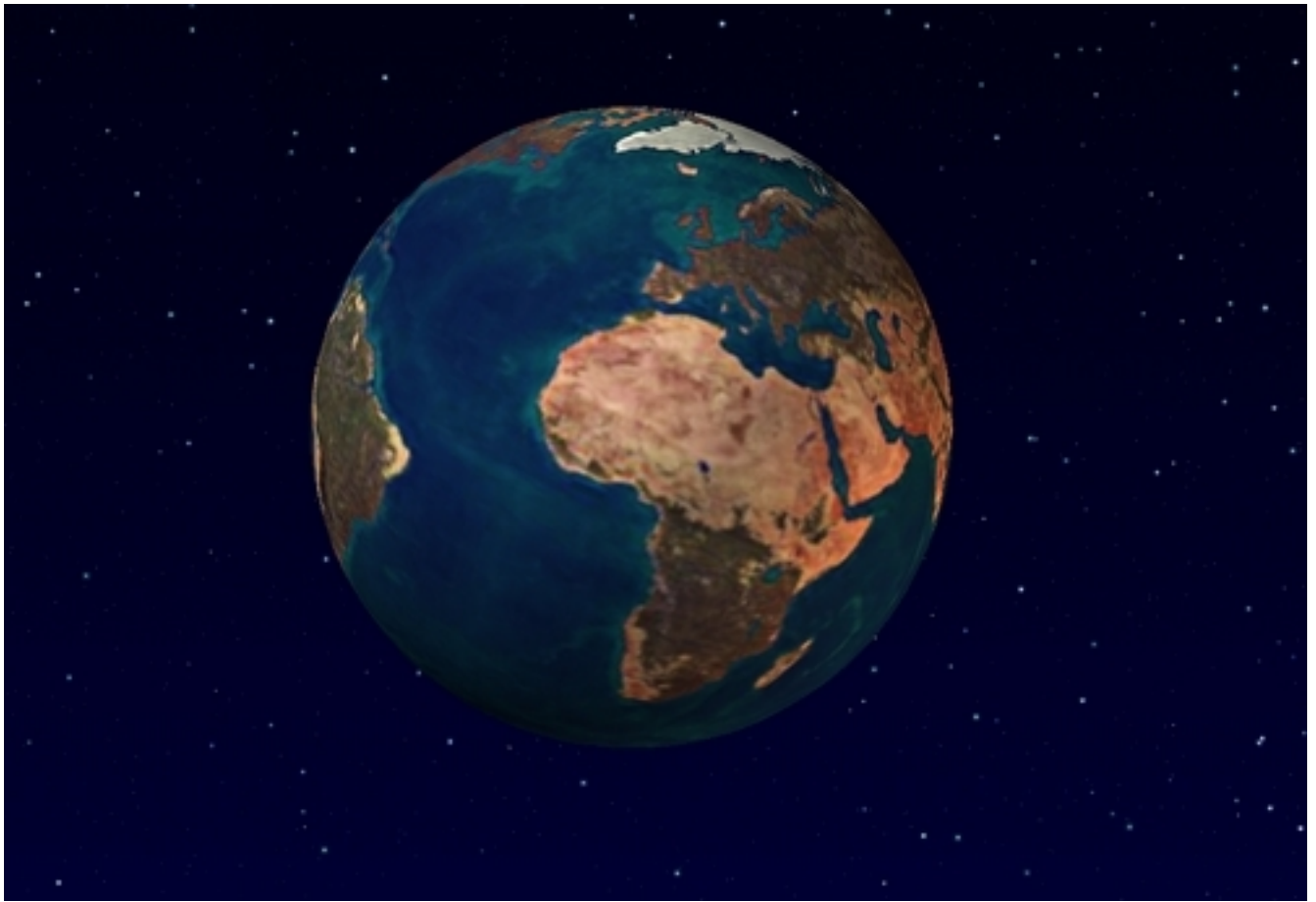
SAVE SETTINGS MAY BE SELECTED BEFORE CLICKING MAKE MOVIE

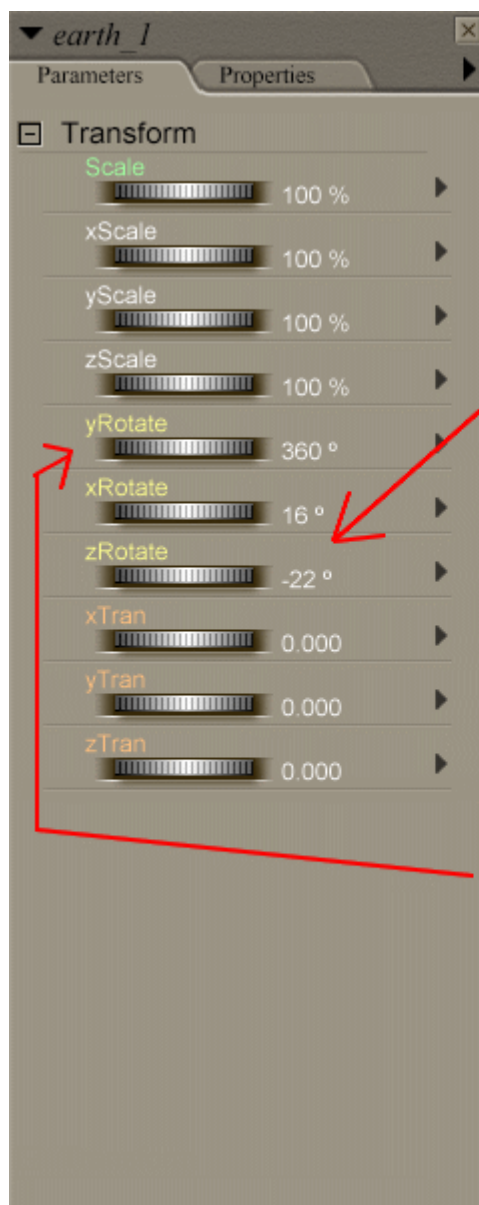
THE FINAL BOXES THEN APPEAR FOR CHOOSING DESTINATION FOLDER, FILE NAME, AND VIDEO QUALITY.

FINALLY, BOX APPEARS IN LOWER LEFT SIDE INDICATING PROGRESS OF VIDEO RENDERING.









POSER SETTINGS FOR 360 EARTH ROTATION

Since the earth varies in a 22-24 degree tilt, the zRotate setting is -22 and set xRotate at 16.

The earth rotates counterclockwise. To keep the file size down, use the default 30 frames, setting frame 1 to yRotate 0 and set frame 30 to yRotate 360. Poser will calculate the entire spin.