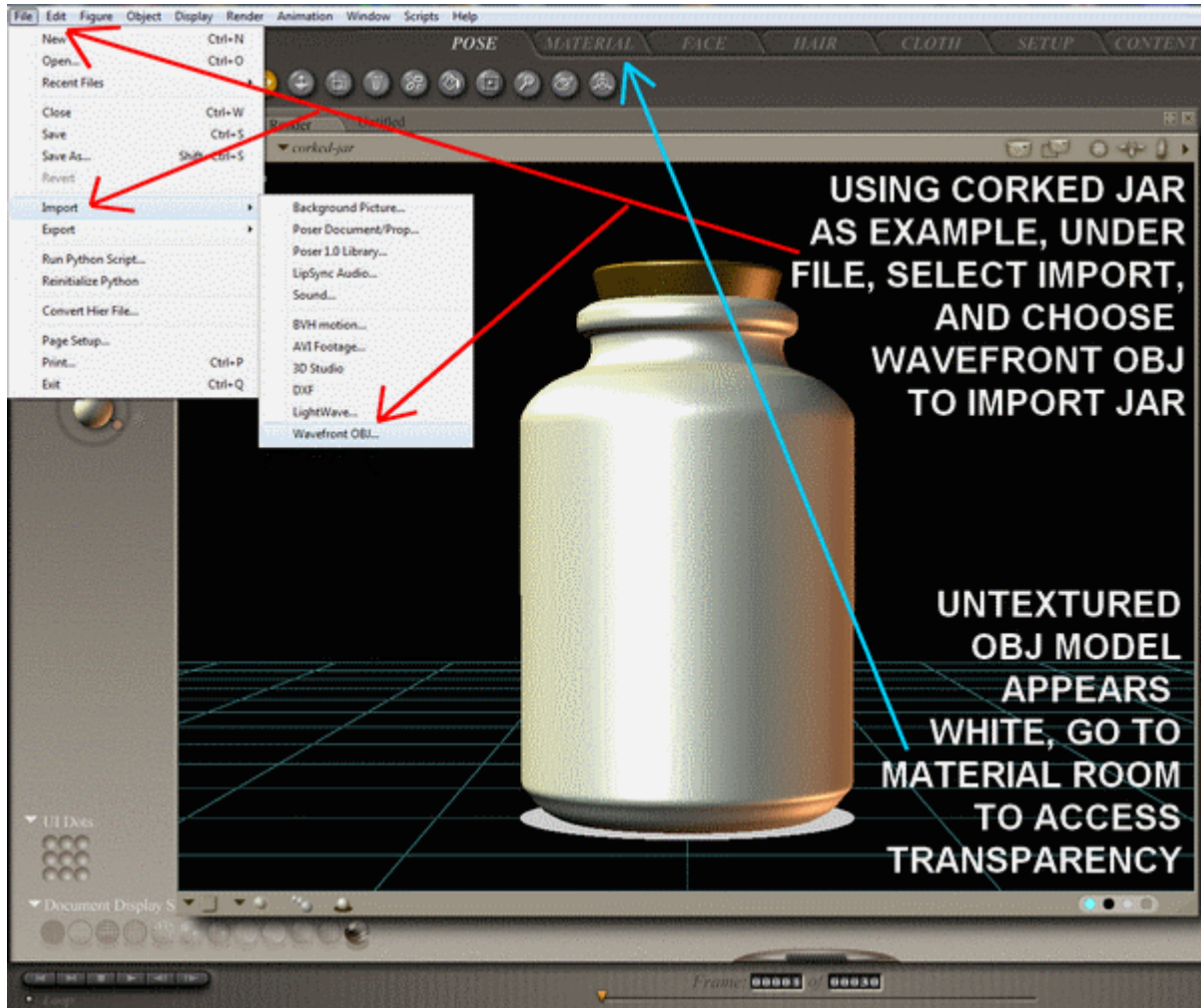
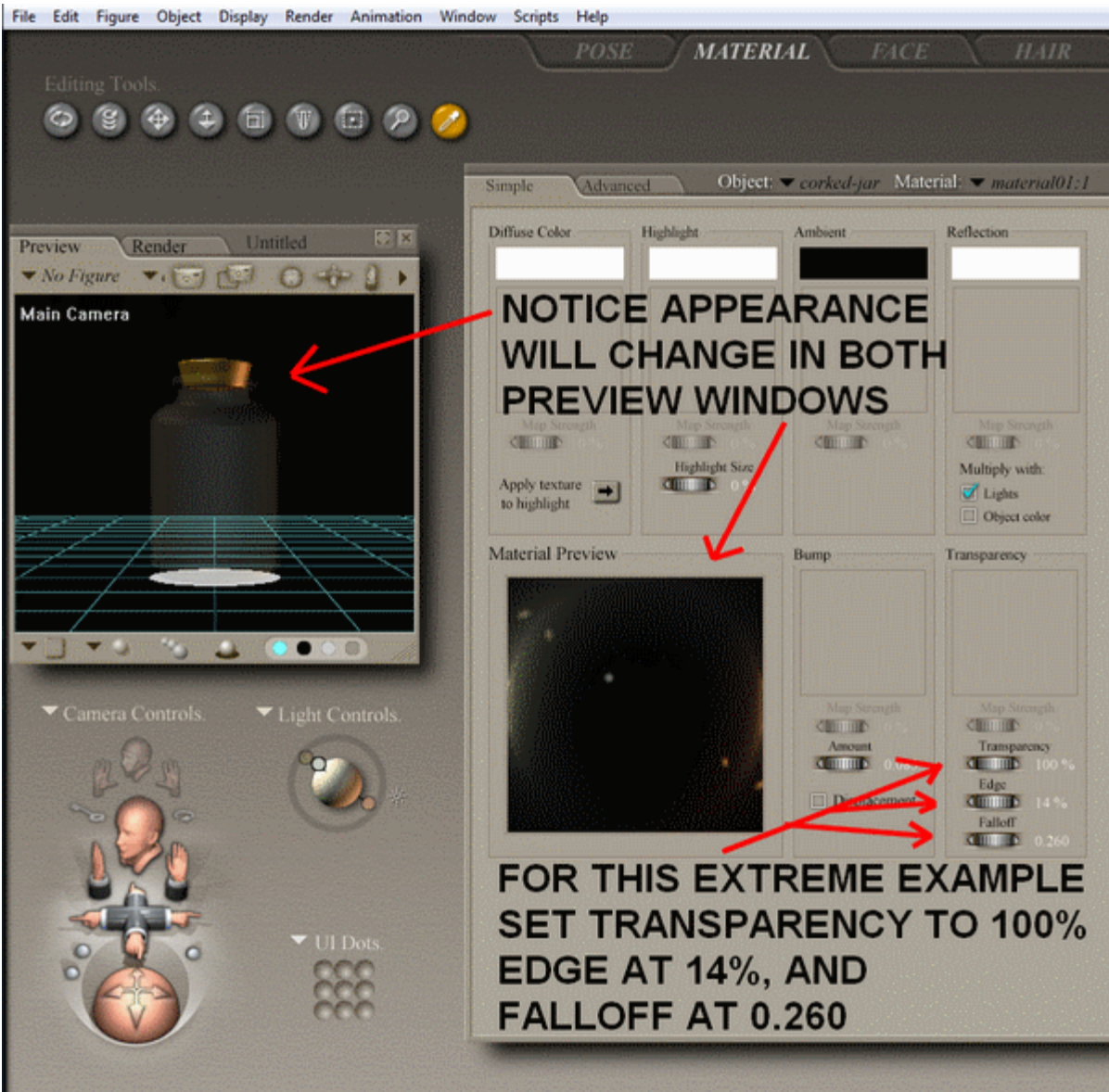


# POSER 7 TIPS

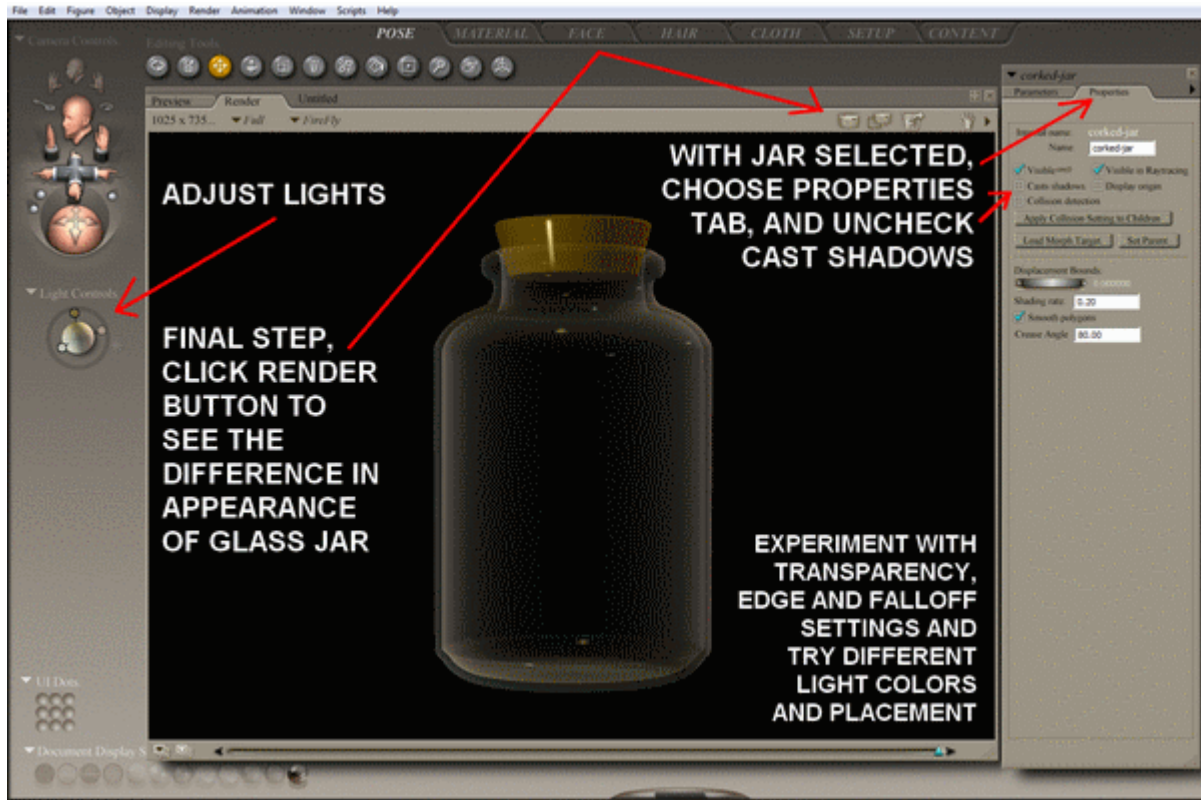
## MATERIAL ROOM TRANSPARENCY SETTINGS FOR GLASS APPEARANCE



## MATERIAL ROOM TRANSPARENCY SETTINGS FOR GLASS APPEARANCE

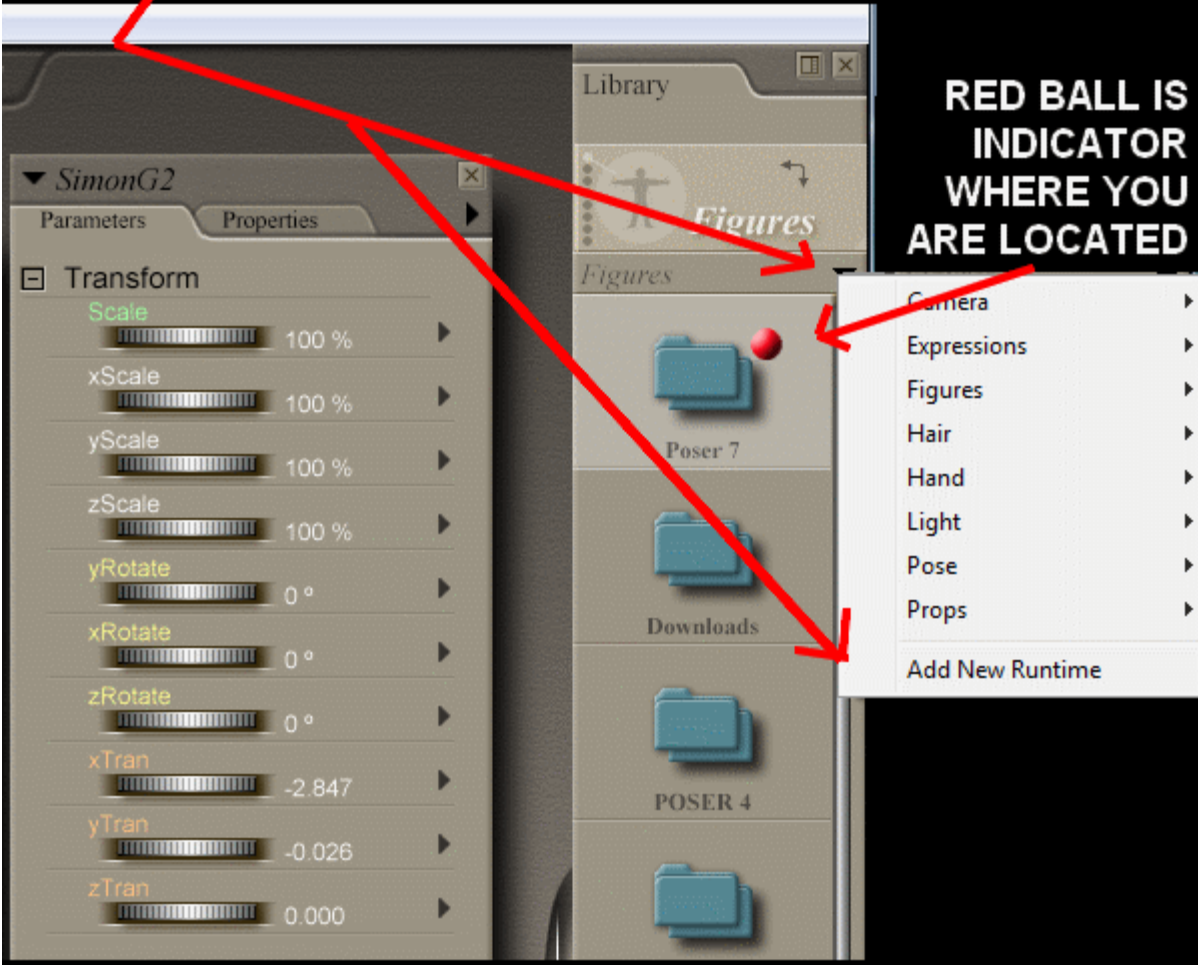


## MATERIAL ROOM TRANSPARENCY SETTINGS FOR GLASS APPEARANCE



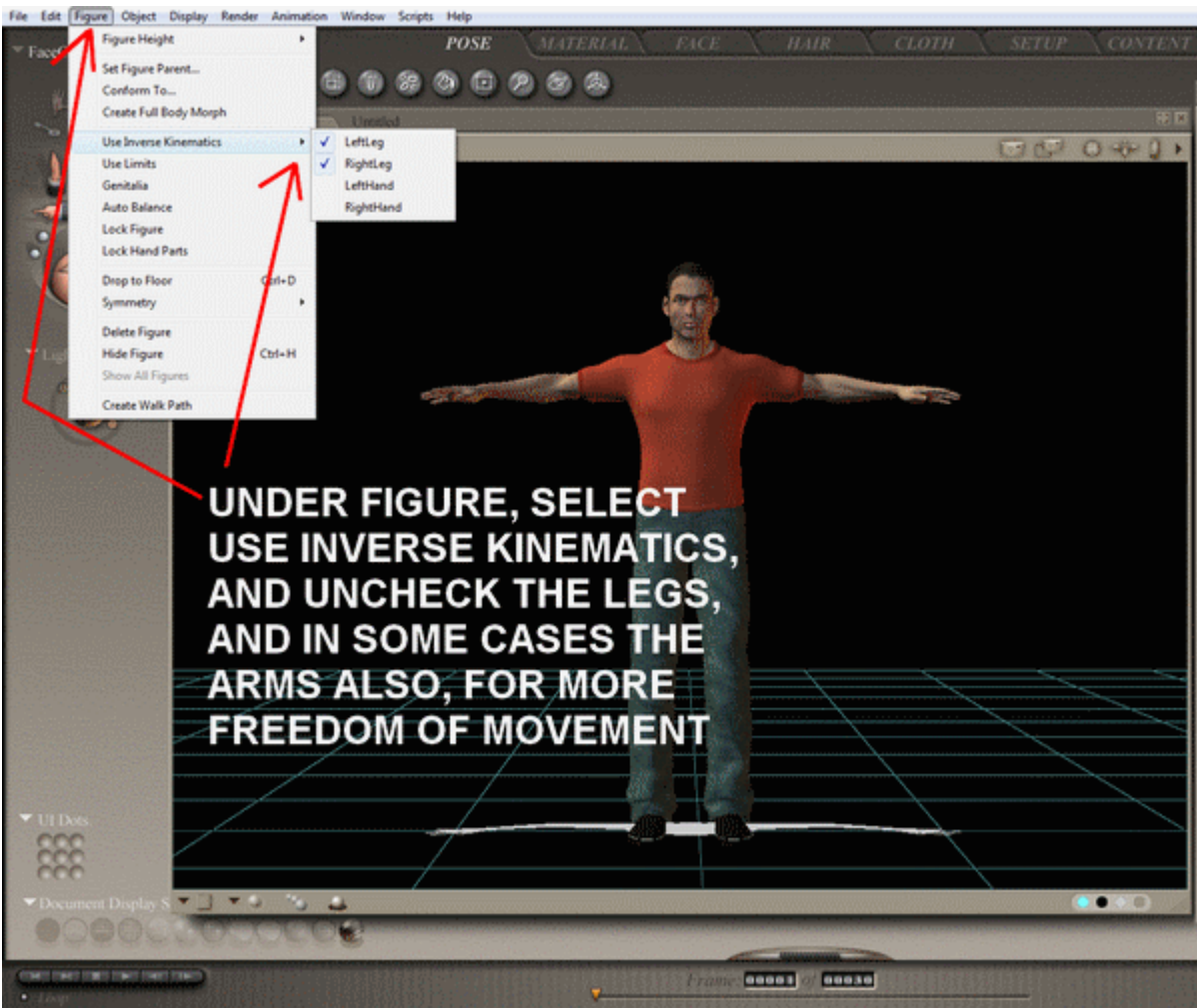
## HOW TO ADD RUNTIME

**IN POSER 7 CONTENT DIRECTORY,  
CLICK ARROW FOR DROP DOWN  
TO SELECT ADD NEW RUNTIME**

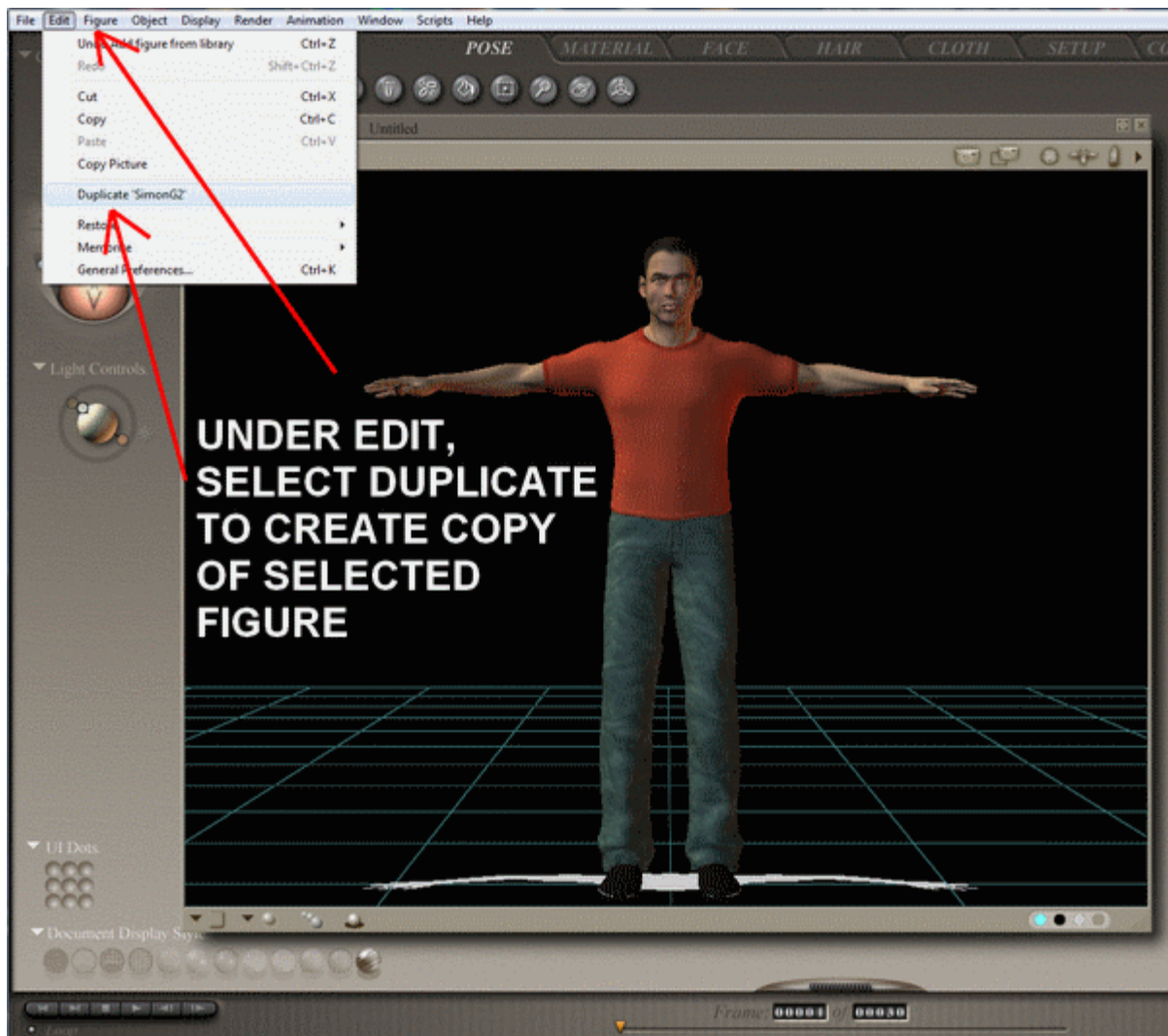




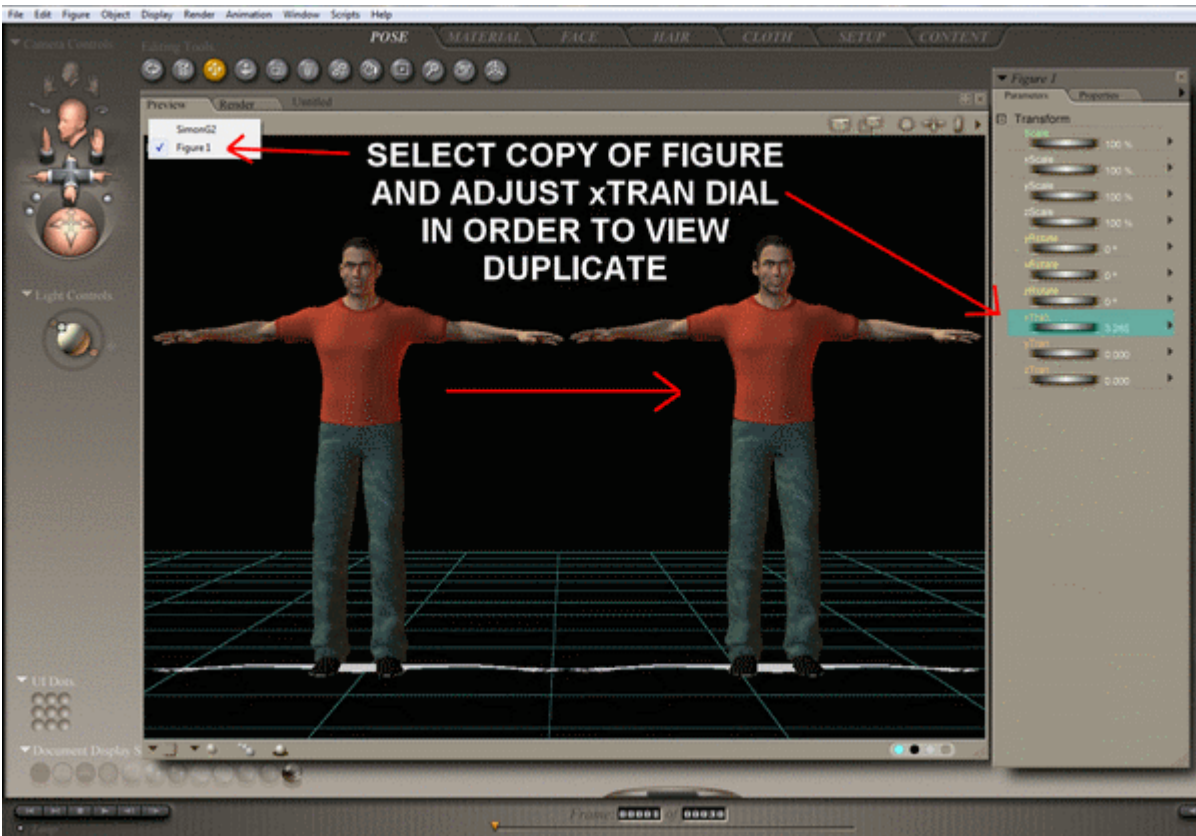
## INVERSE KINEMATICS



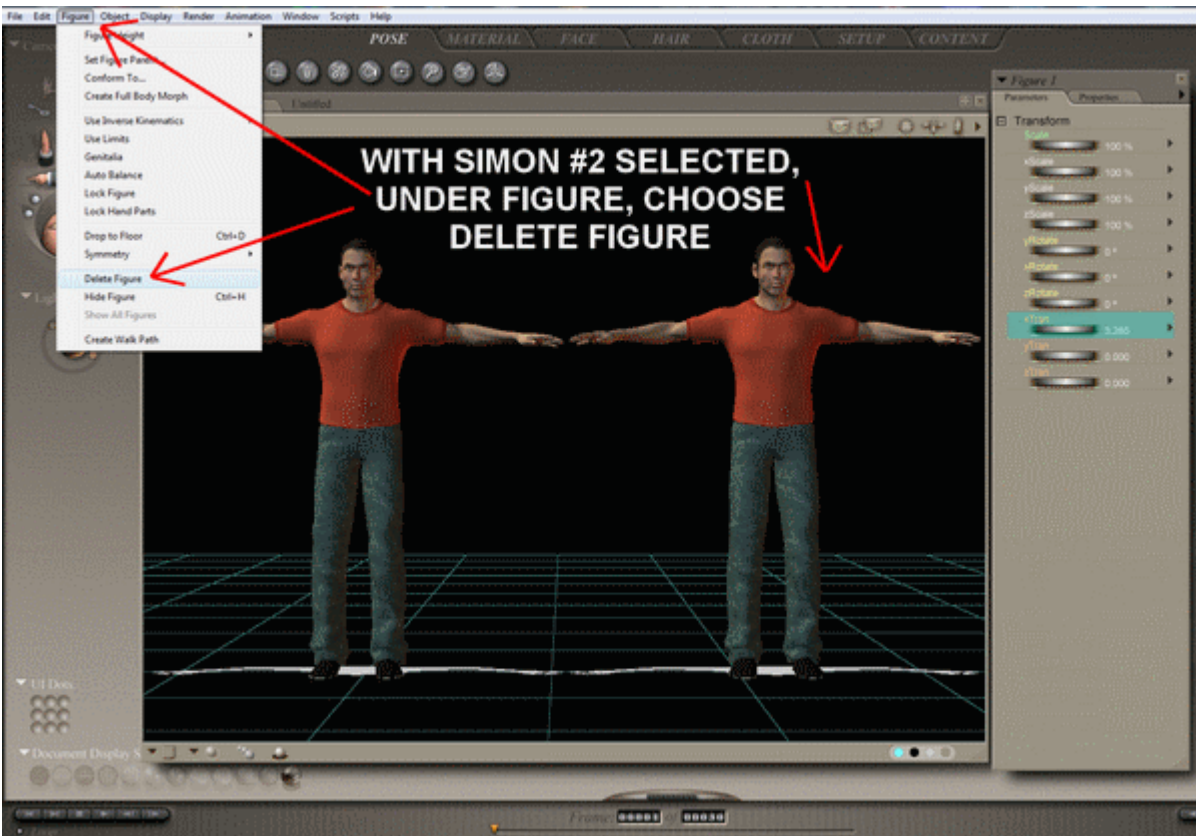
## DUPLICATE FIGURE



## DUPLICATE FIGURE

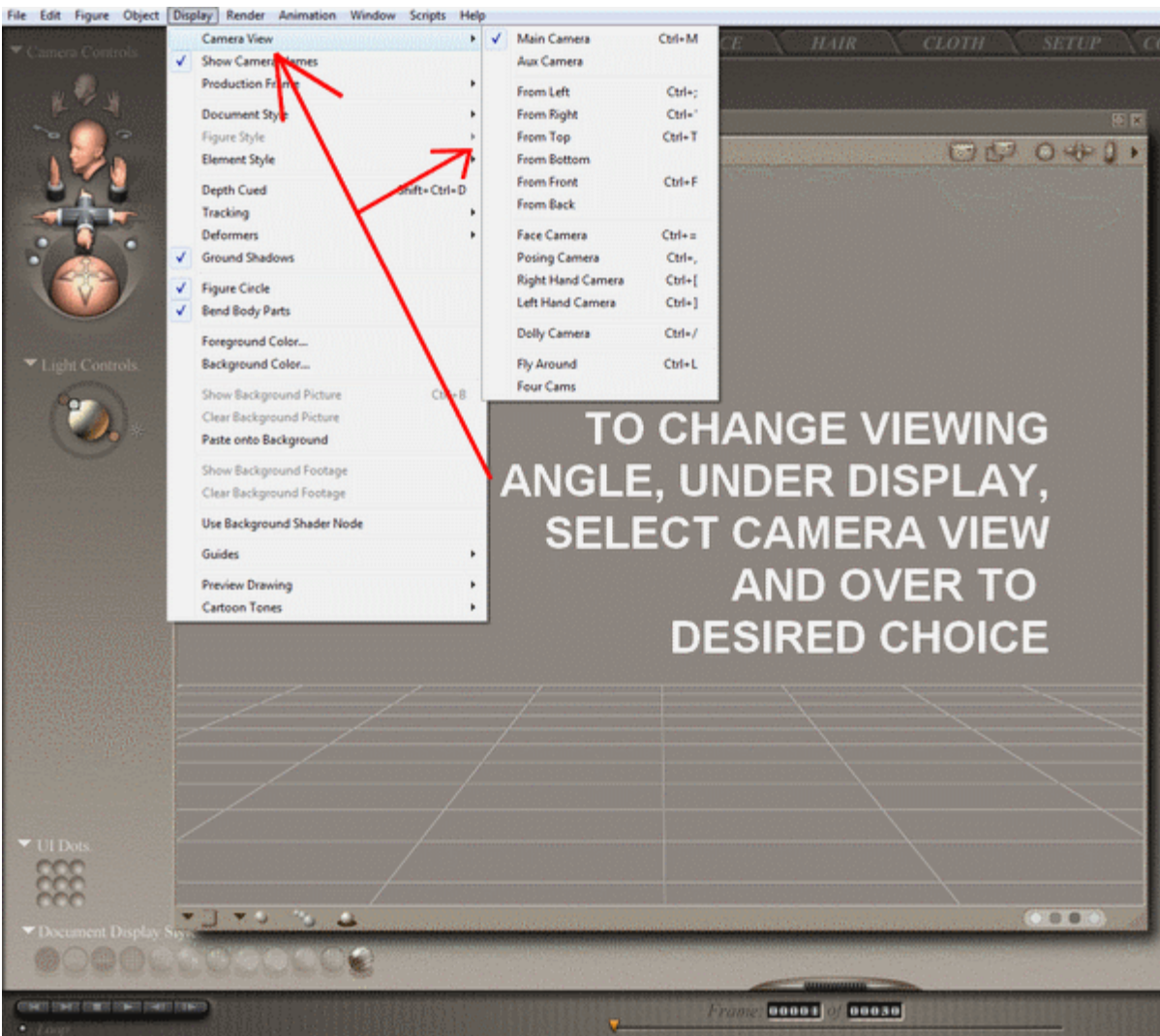
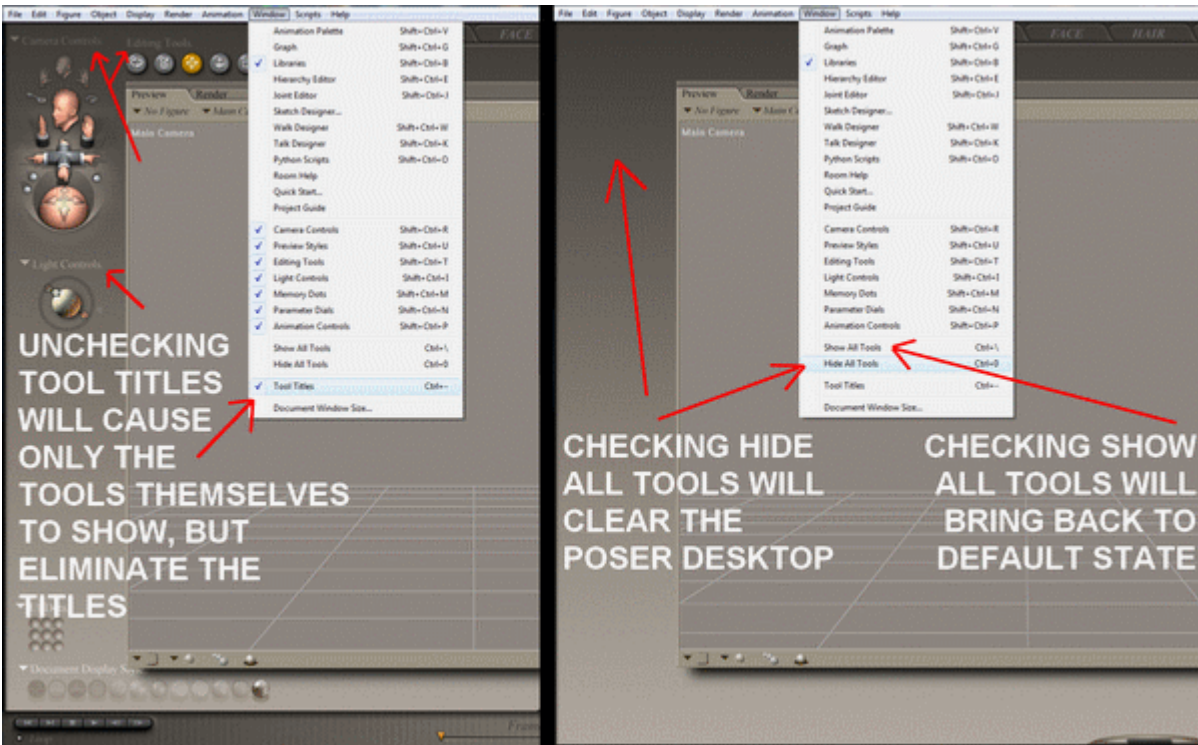


## DELETE FIGURE

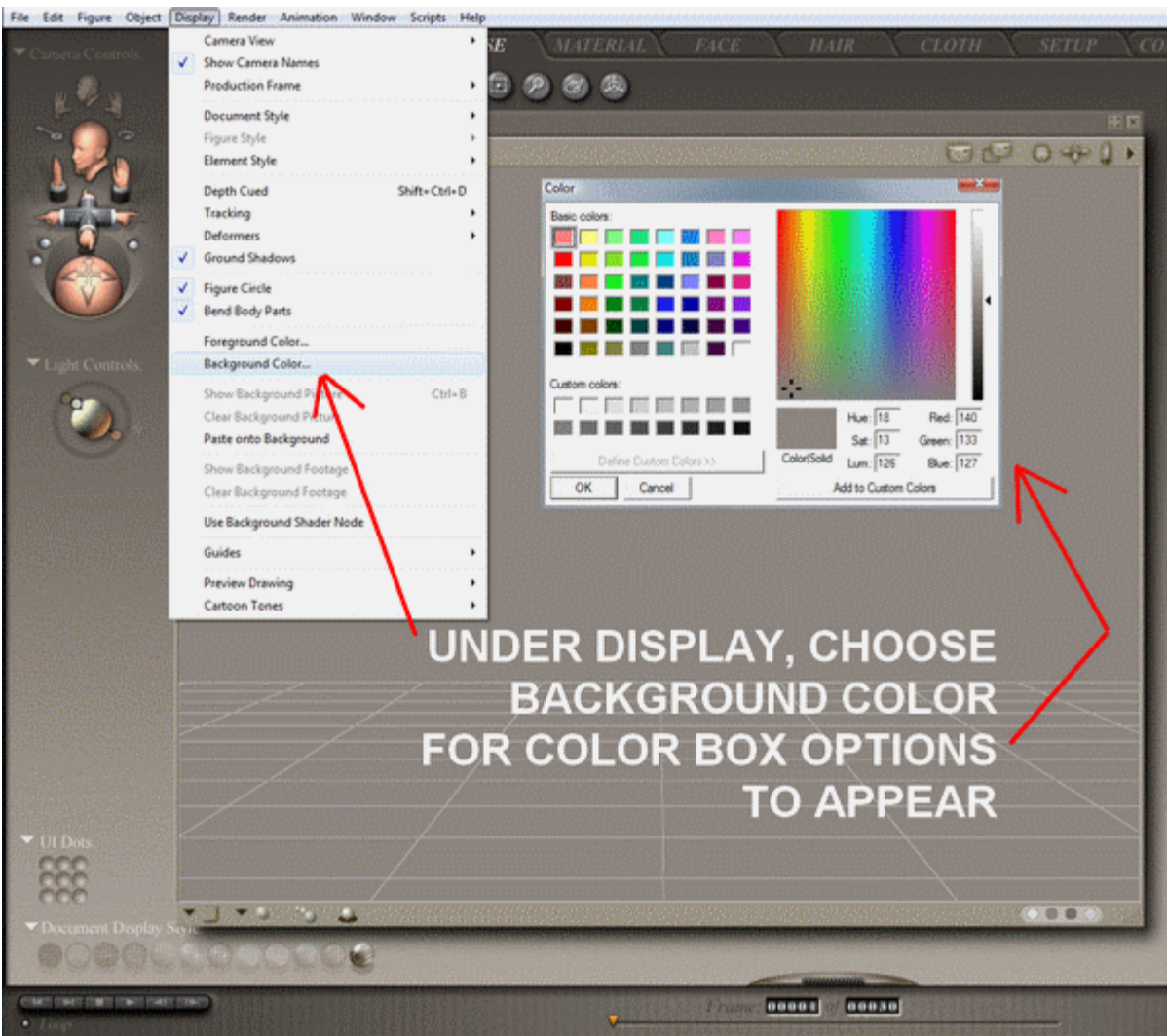


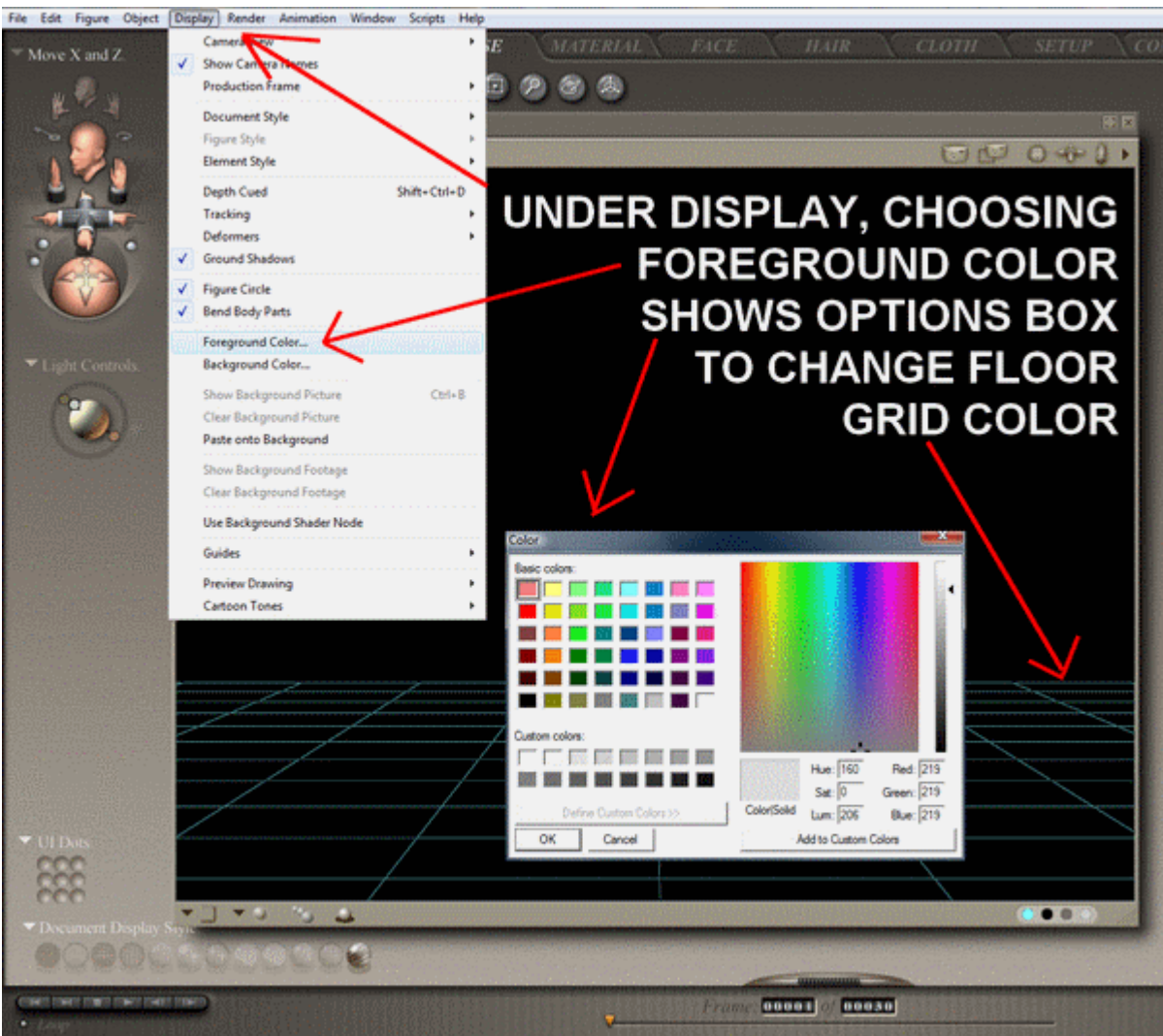


## INTERFACE TIPS





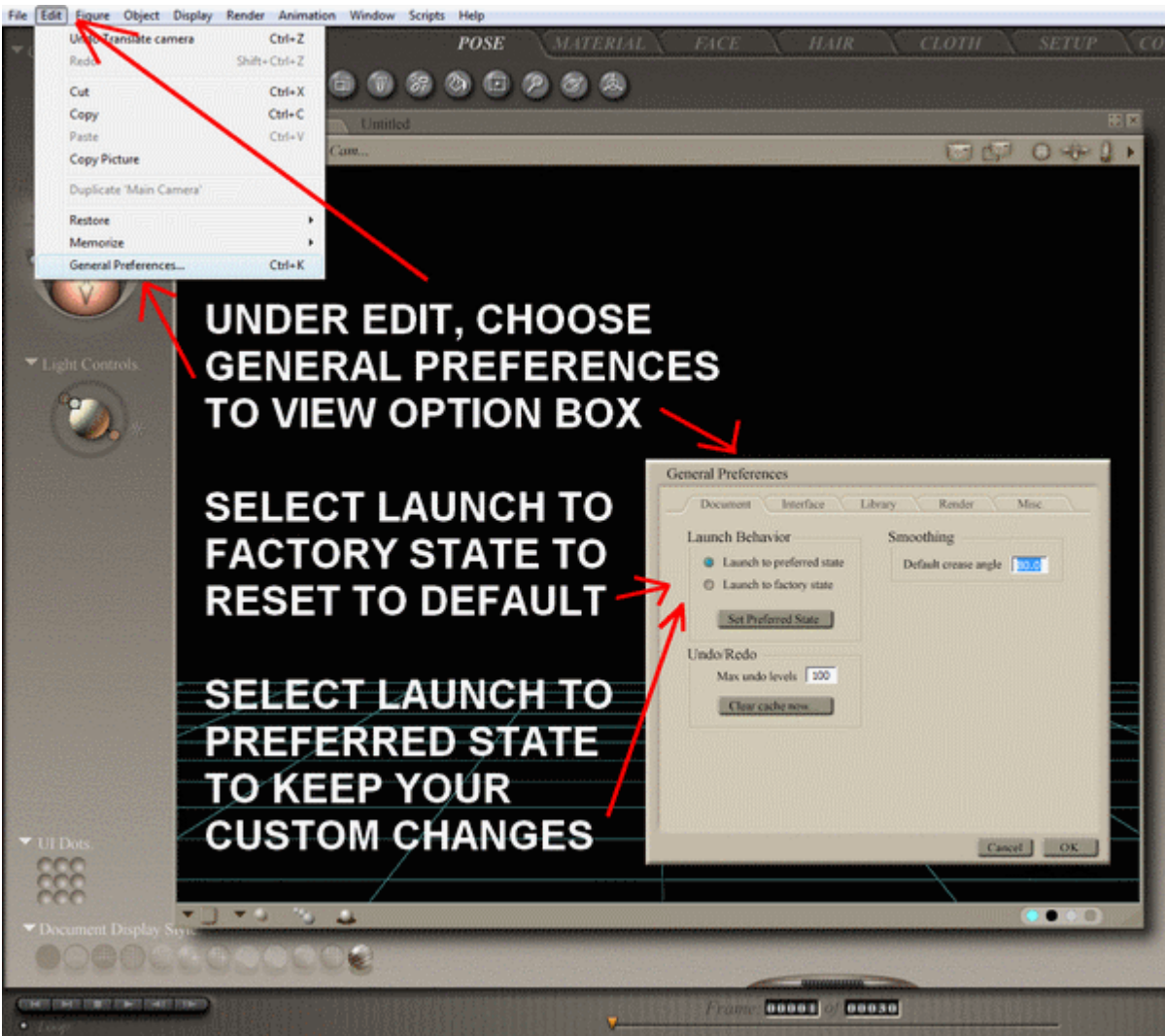




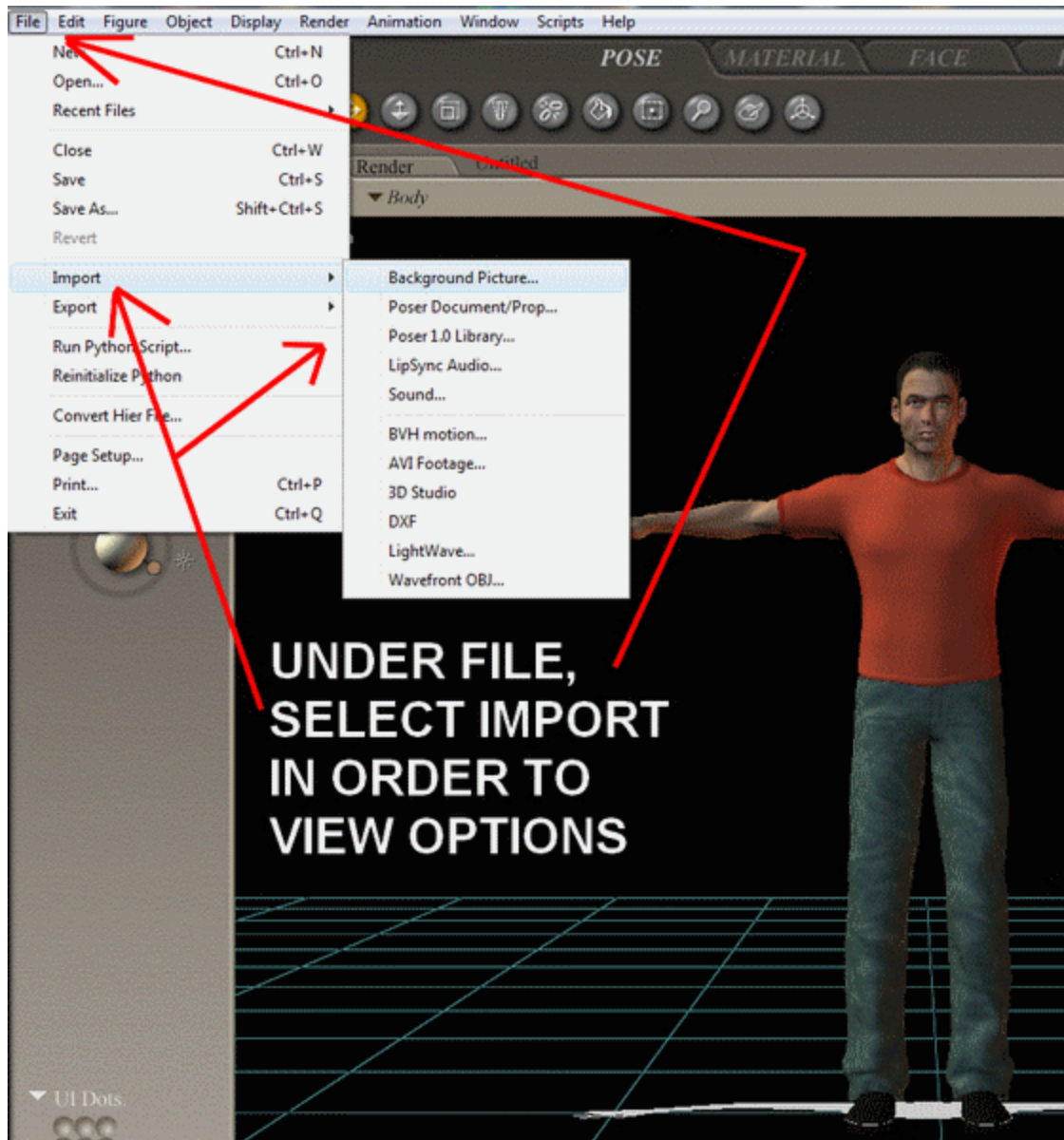
**ANOTHER METHOD OF  
CHANGING COLORS,  
ROLL CURSOR OVER  
COLOR DOTS IN  
LOWER RIGHT CORNER  
AND LEFT CLICK TO  
VIEW OPTIONS BOX**



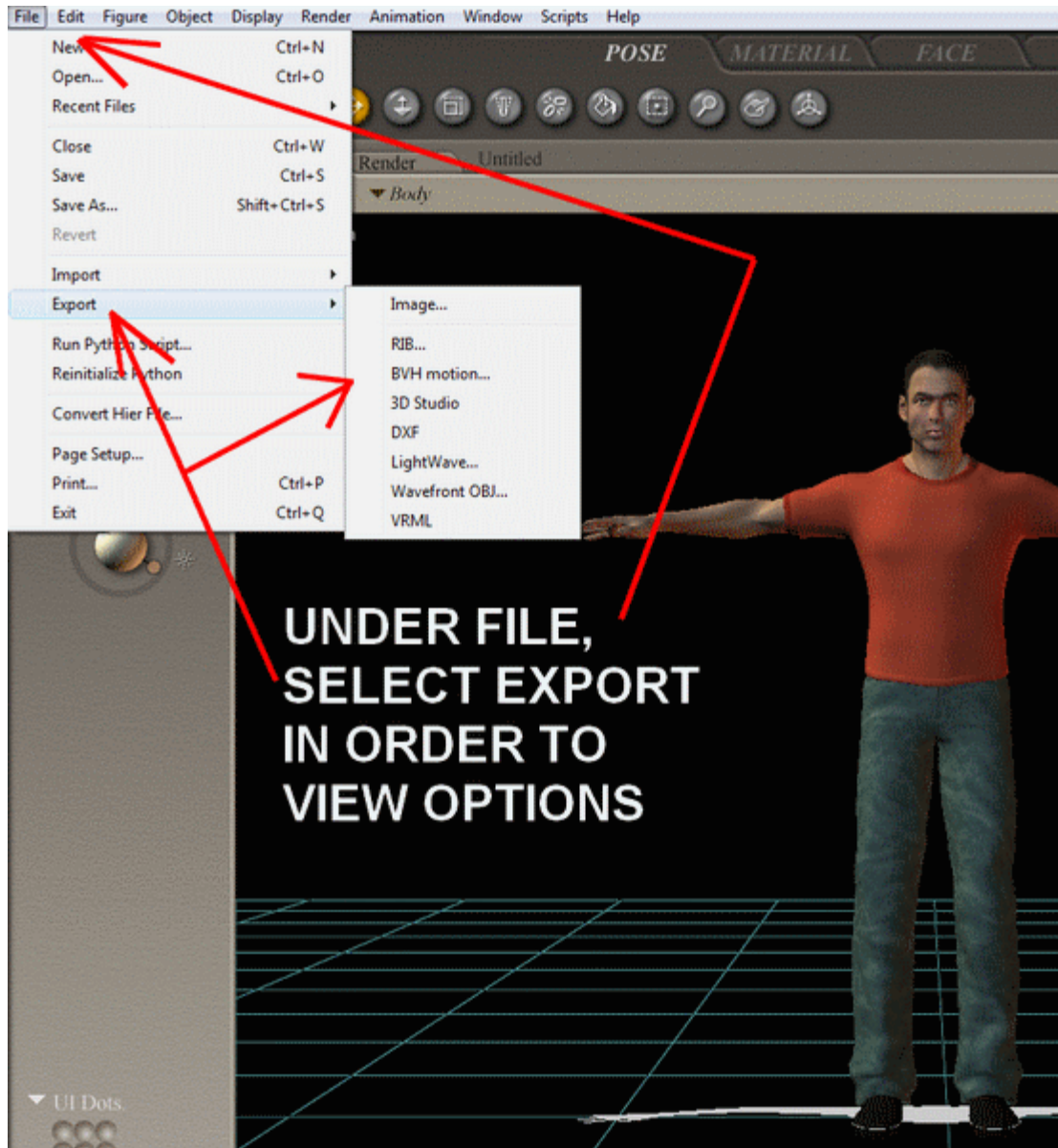




## IMPORT

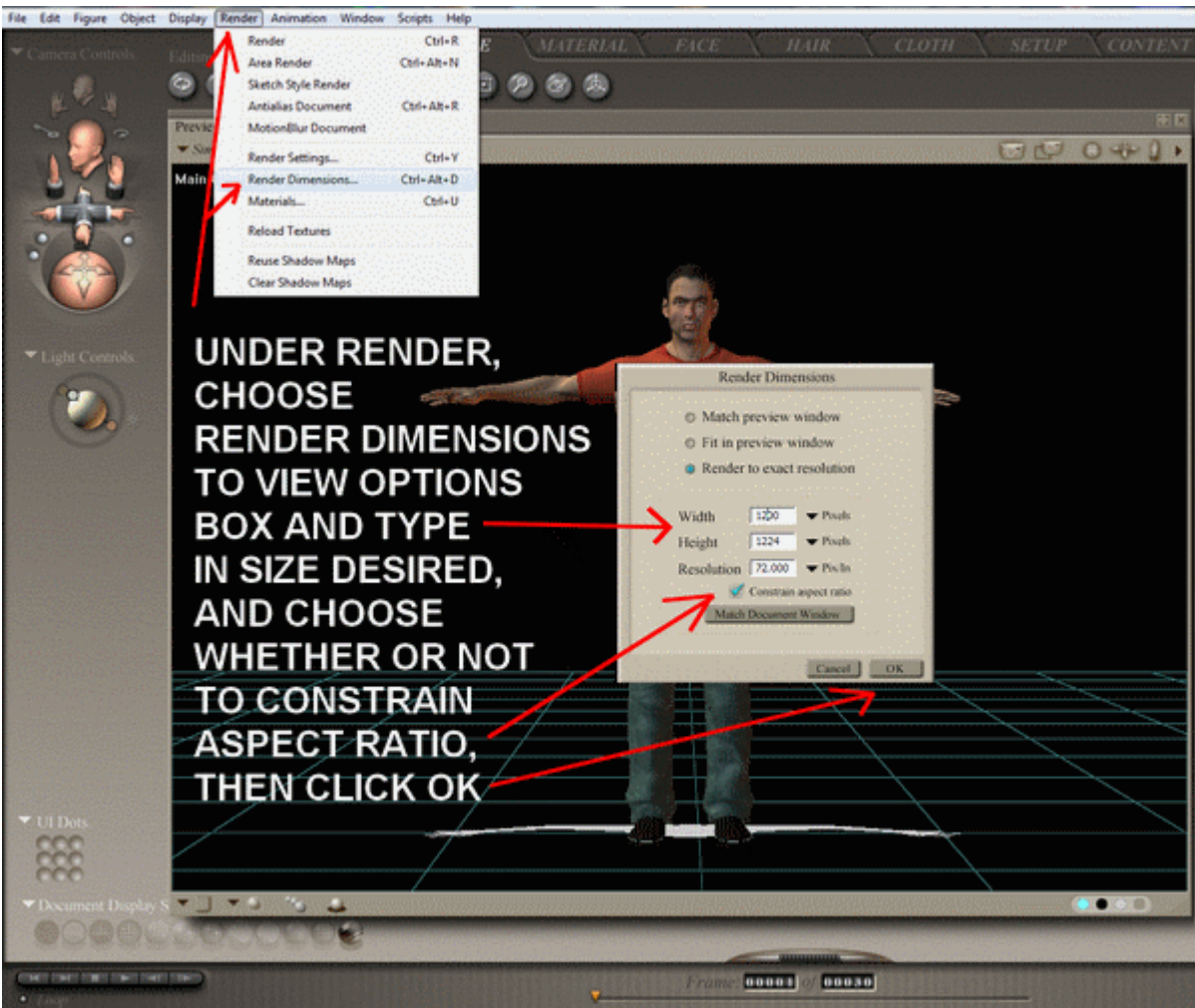


## EXPORT



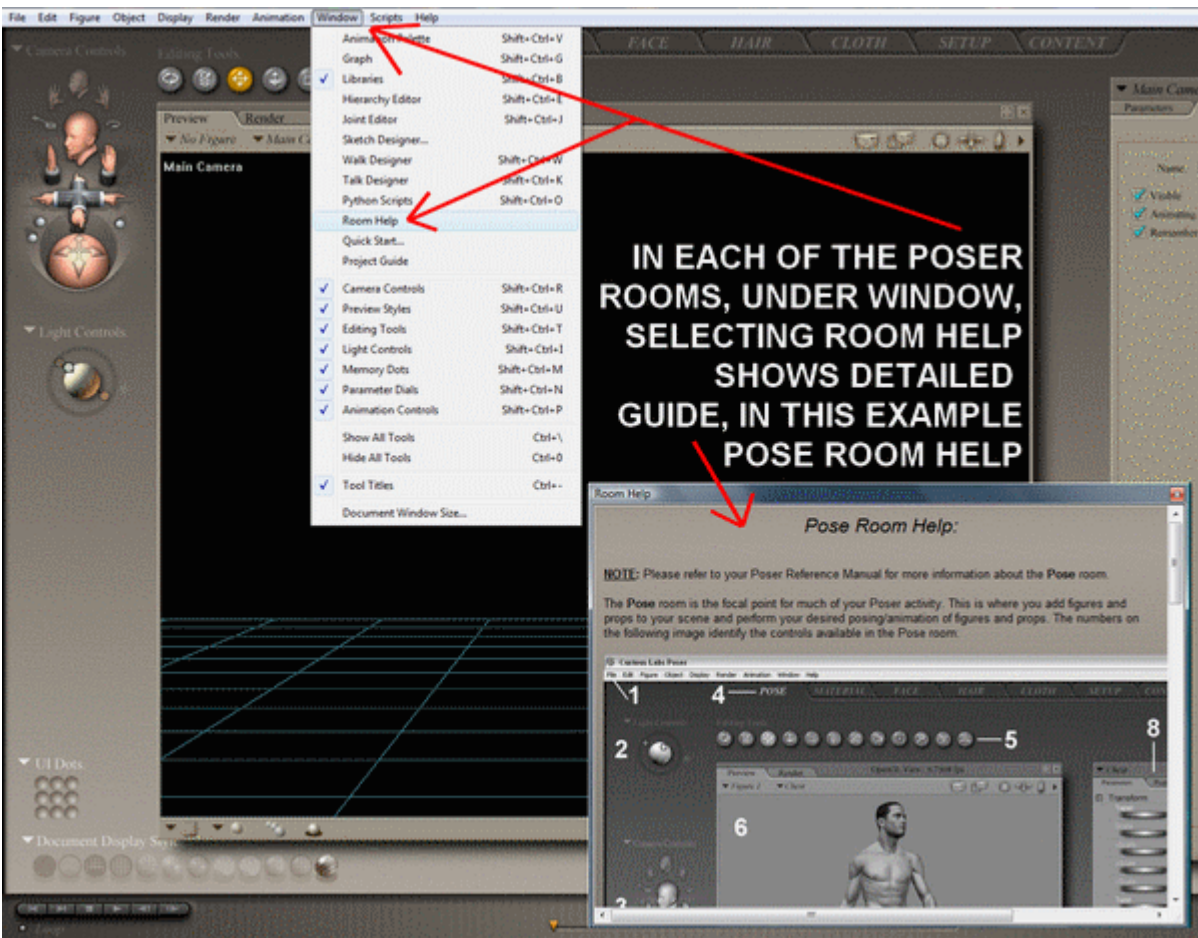


## RENDER DIMENSIONS



# POSER HELP FILES

EACH ROOM HAS ITS OWN HELP GUIDE  
UNDER WINDOW – ROOM HELP

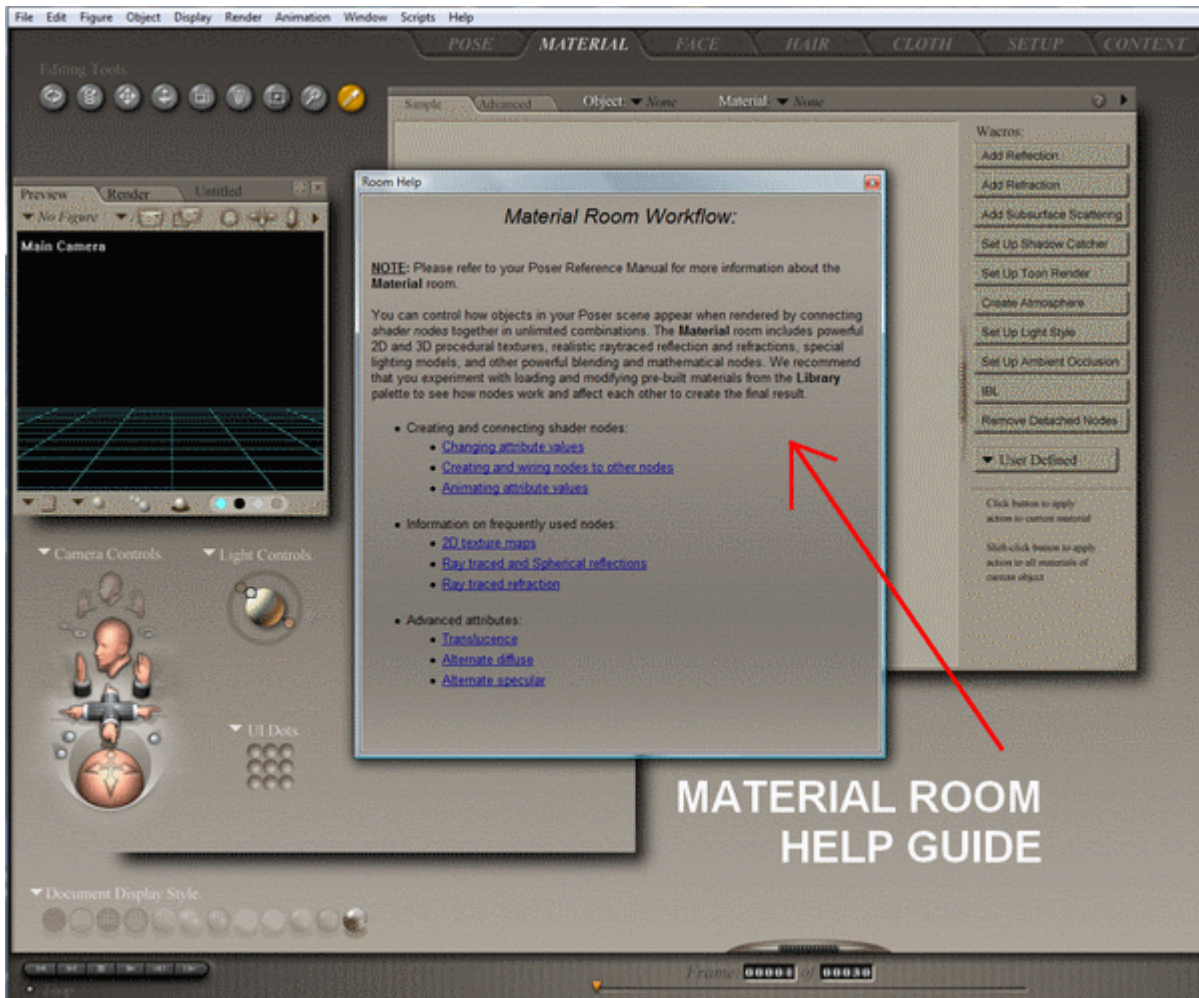


# IN THE HAIR ROOM UNDER WINDOW – ROOM HELP





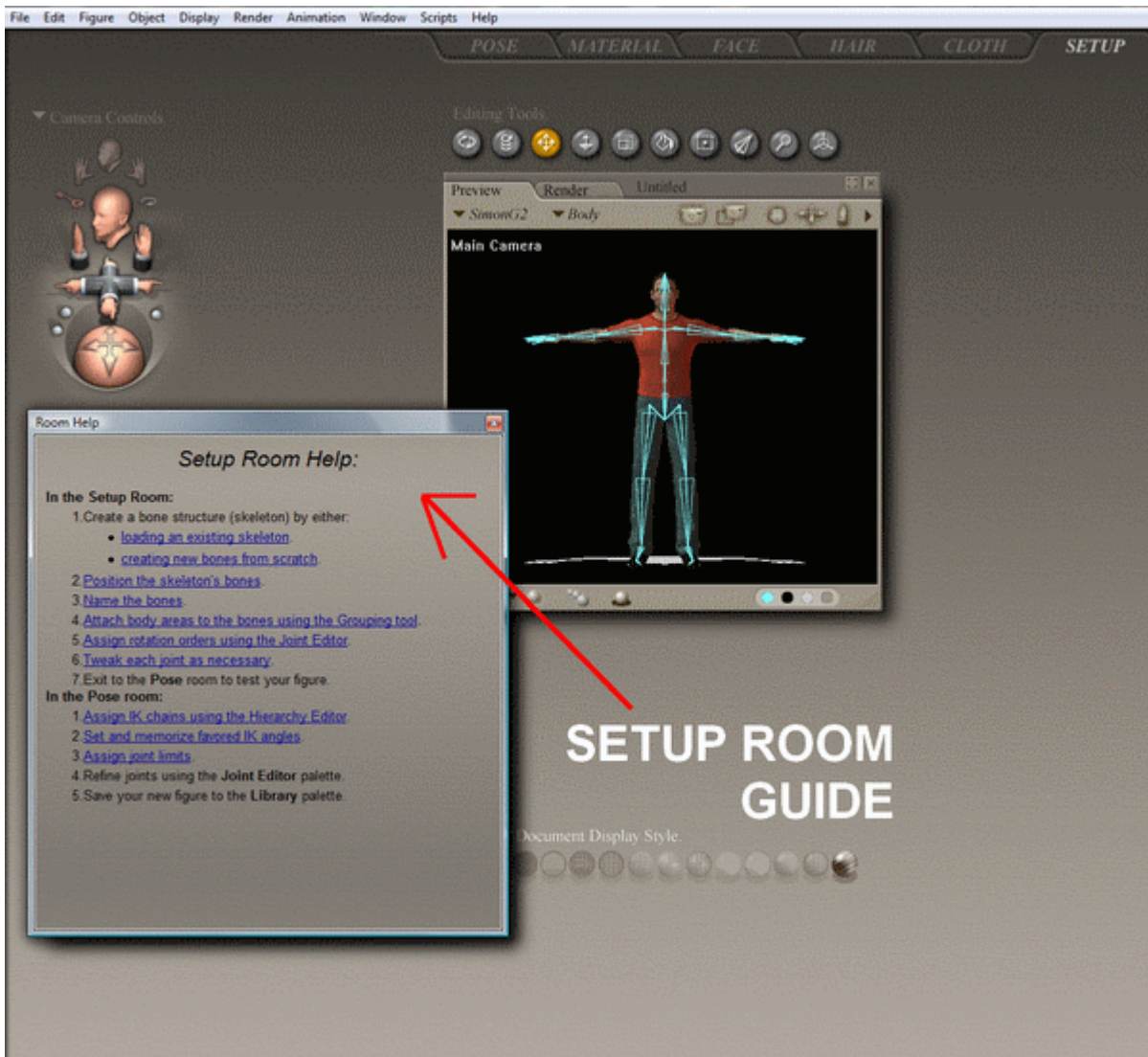
## IN THE MATERIAL ROOM UNDER WINDOW – ROOM HELP



## IN THE CLOTH ROOM UNDER WINDOW – ROOM HELP

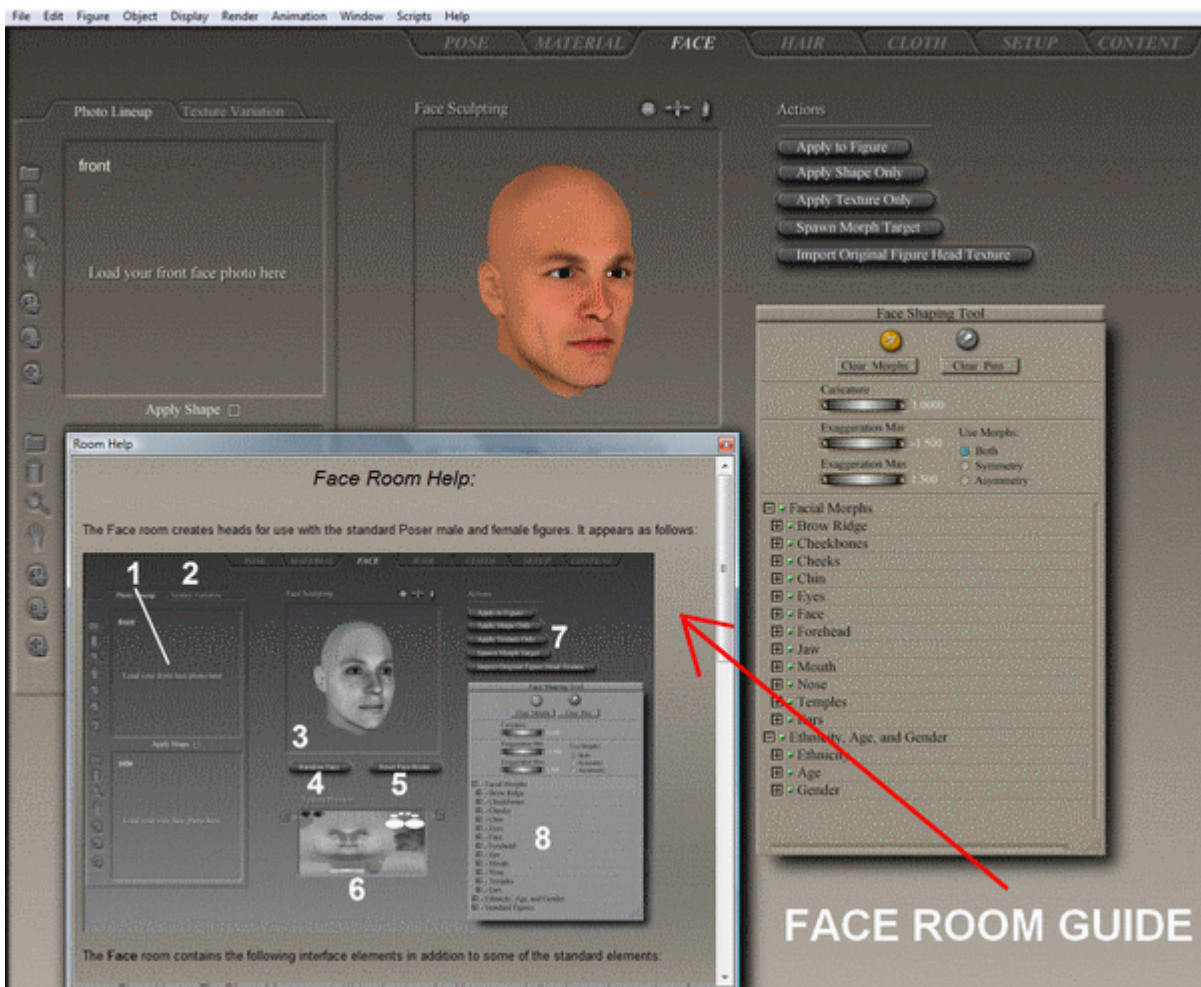


## IN THE SETUP ROOM UNDER WINDOW – ROOM HELP





## IN THE FACE ROOM UNDER WINDOW – ROOM HELP





## POSER MANUALS

